
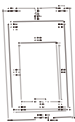
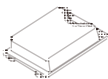








1 | Preparation

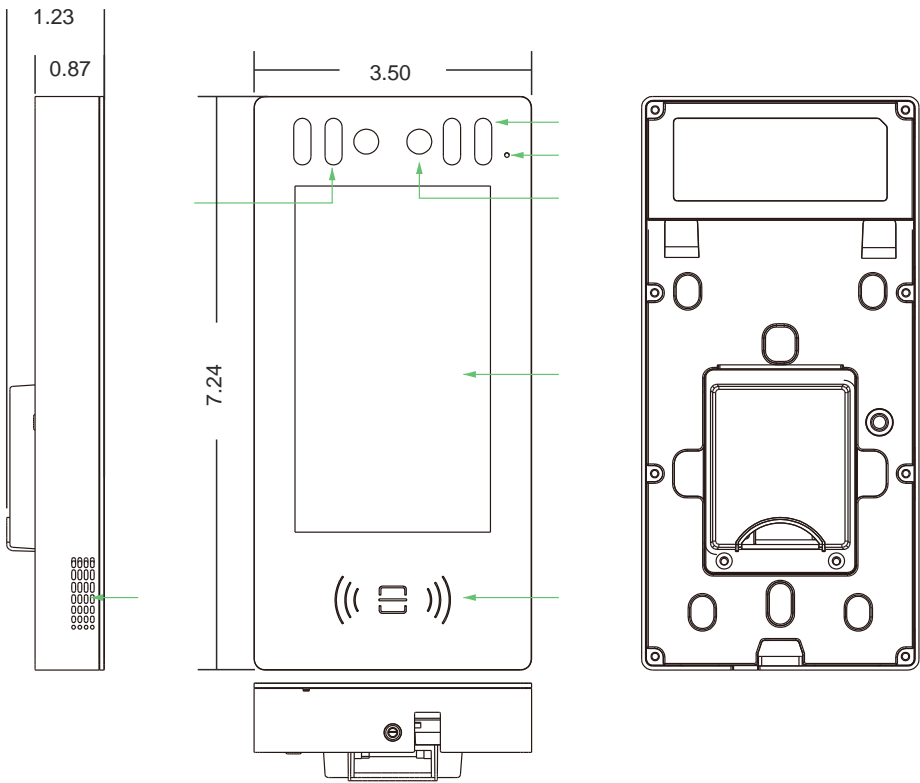
PREPARATION

Please make sure the package contains the following items.

SL-SV-5  x1	Wall bracket  x1	Back cover  x1	Hexagonal wrench  x1	
Screw(M3x7.6)  x1	Screw(M2.5x5)  x2	Screw(M4x30)  x2	Screw(ST4x20)  x4	Drywall anchor  x4

2 | Product Overview

PRODUCT OVERVIEW



LCD	Camera	White light LED	Infrared LED
MIC	Speaker	RF card reader	

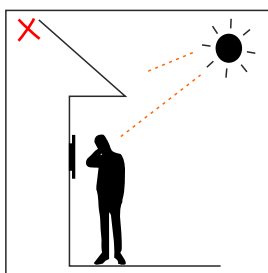
3¹ Installation Environment

INSTALLATION ENVIRONMENT

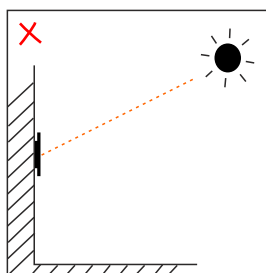
The device can be installed in both indoor and outdoor environments.

Outdoor installation: Avoid exposing the device to direct sunlight, which will cause damage to device and components due to high temperature.

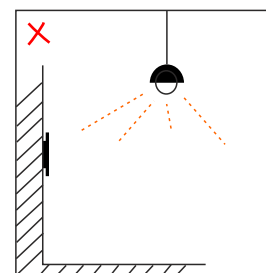
Indoor installation: The device should be installed 2 meters (6 feet) away from light or 3 meters (9 feet) away from window/door.



✗ Backlight



✗ Direct sunlight



✗ Close to light

4¹ Installation

INSTALLATION

STEP1

A. Without Type 118 Junction Box

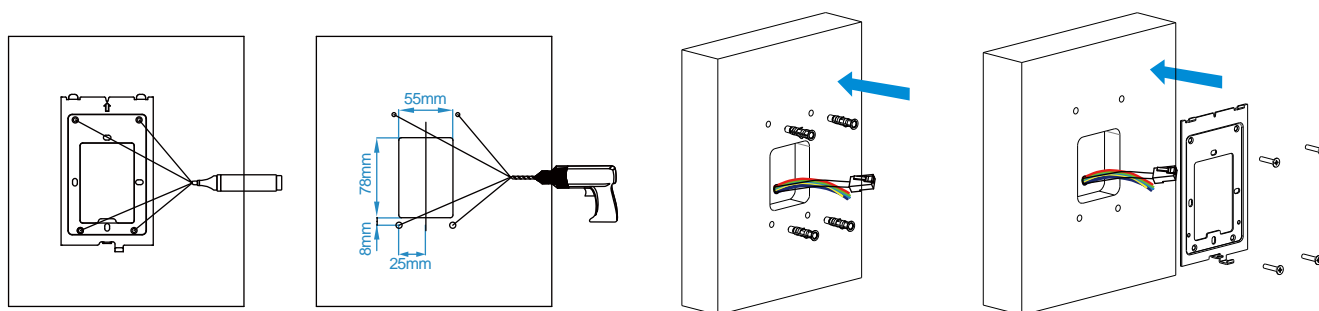
Place the bracket against the wall and around the cable outlet area, then mark the position of drilling hole according to each hole of the bracket.

Take the wall bracket off, make sure the marked drilling holes are in the right position around the cable outlet area (shown as diagram). Then drill holes with 6MM churn drill on each marked position.

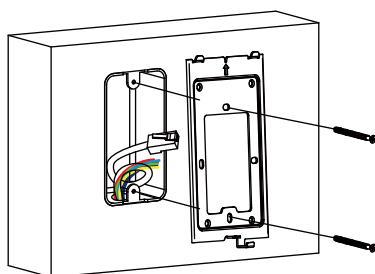
Drive 4 drywall anchors into drilling positions.

Pull all cables and cords through the bracket, then lock the wall bracket by four ST4×20 screws.

* NOTE: For installation on wooden walls, you can skip and .

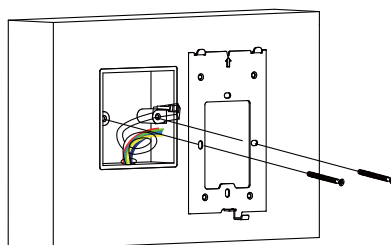


B. With Type 118 Junction Box (recommended)



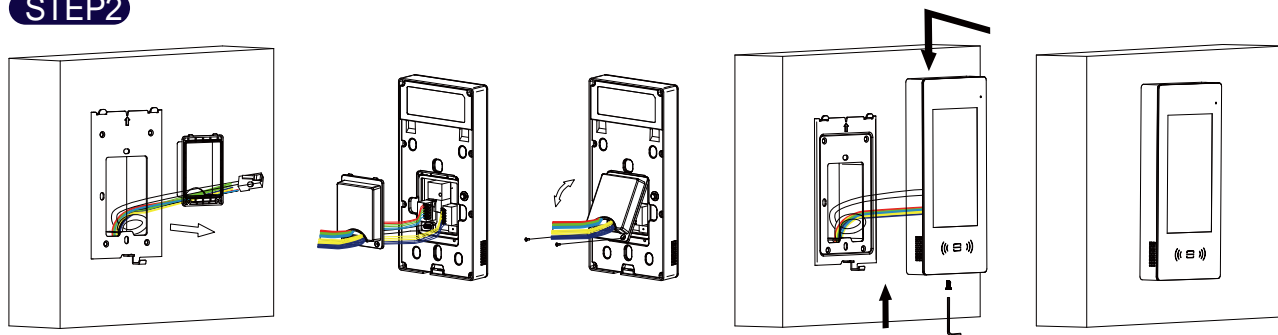
Pull all the cables through the junction box and wall bracket, then lock the wall bracket onto the junction box by two M4x30 screws.

C. With Type 86 Junction Box



Pull all the cables through the junction box and wall bracket, then lock the wall bracket onto the junction box by two M4x30 screws.

STEP2



Pull all cables through the waterproof cover.

Connect the cables to the corresponding interfaces of the device

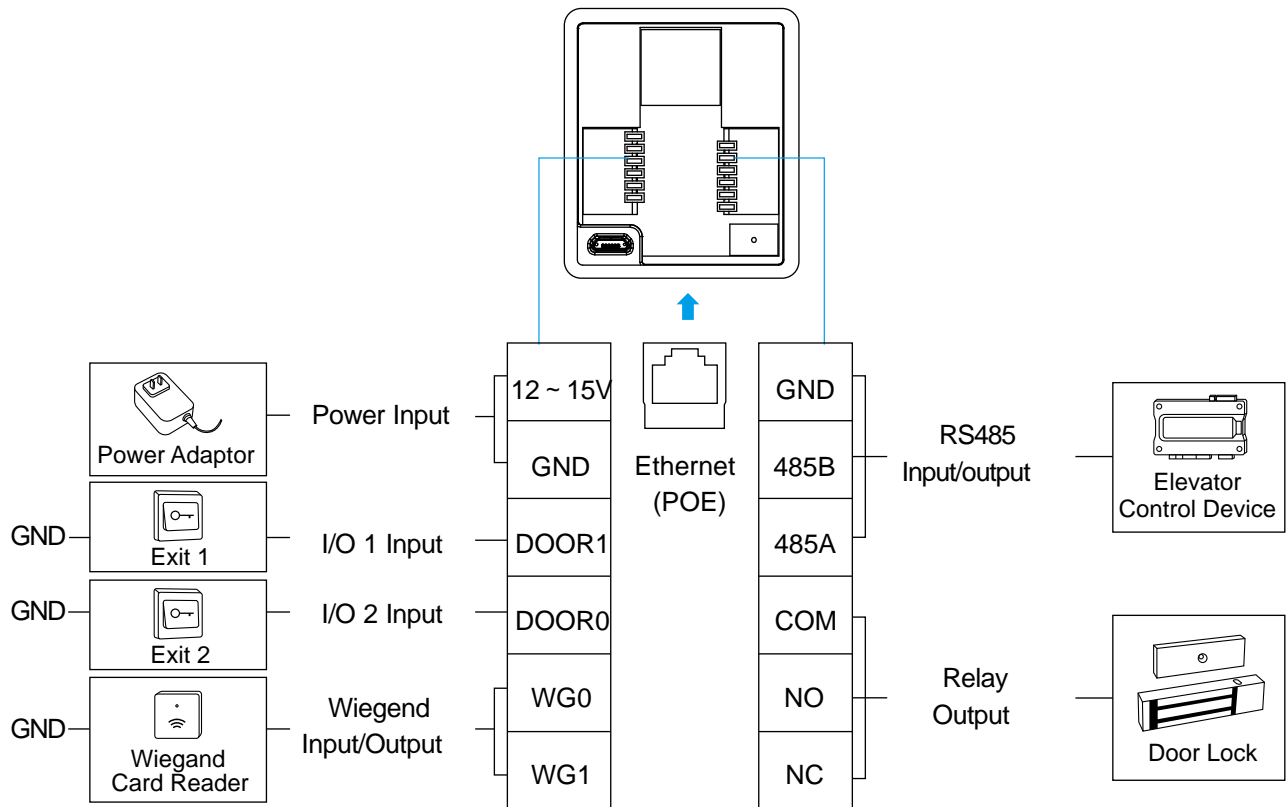
Lock the waterproof cover onto device with two M2.5x5 screws.

Attach the device onto the bracket on the wall, press down to lock by hooks, then use hexagonal wrench to lock the device from bottom with one M3x7.6 screw.

Installation is completed.

5 Interfaces

INTERFACES



See all installation manuals:

<https://www.swiftlane.com/swiftlane-installation-manual>

Scan QR code to visit all installation manuals

Support

✉ support@swiftlane.com

☎ 505-65-SWIFT / 505-657-9438

🌐 <https://www.swiftlane.com>

Sales

✉ sales@swiftlane.com

☎ 833-60-SWIFT / 833-607-9438

